

# Classic Elite Yarns

## Skye Tweed Child's Cable Rib Pullover



Designed by: Kristen TenDyke

**SIZES:** 2 (4, 6, 8)

**Finished Measurements:** 25 (27, 29, 31)"

### MATERIALS:

**Skye Tweed** by **Classic Elite** (100% wool; 50 gram ball = approx 110 yards)

- 4 (5, 6, 7) balls 1253 Tapestry

### Needles

- One pair size US 6 (4 mm)

### Or size to obtain gauge.

- One 16" circular size US 5 (3.75 mm)
- Two cable needles (cn)
- Stitch markers

**GAUGE:** 19 sts and 27 rows = 4" in Cable Rib Pattern. **Take time to save time, check your gauge.**

### PATTERN STITCHES:

**Stockinette Stitch (St st):** Knit on RS, purl on WS.

### Cable Rib Pattern: (multiple of 14 sts + 2)

See chart on page 2.

### Neck Trim Rib:

#### Circular: (multiple of 7 sts)

Rnd 1: \*P2, k5; rep from \* around.

Rnd 2: \*P3, k3, p1; rep from \* around.

Rnds 3, 4, 6 and 7: Knit the knit sts and purl the purl sts as they face you.

Rnd 5: \*K2, p2, k1, p2; rep from \* around.

Work Rnds 1–7 for Neck Trim Rib.

**NOTE:** When working shaping, if there are not enough sts to work a cable, knit the knit sts and purl the purl sts as they face you.

### BACK

Using larger needles, CO 60 (65, 69, 74) sts.

**Est patt:** (RS) Work 1 (0, 2, 1) sts (edge sts, keep in St st), work 58 (65, 69, 72) sts in Cable Rib patt from Chart, beg and end where indicated for your size, k1 (0, 2, 1) edge sts in St st). Work even as est, working Rows 1–6 once; then rep Rows 7–30 until piece meas 7 (8½, 9½, 10½)" from beg, end WS row.

**Shape Armholes:** (RS) BO 7 (8, 9, 10) sts at beg of next 2 rows—46 (49, 51, 54) sts rem. Work even until Armhole meas 5½ (6, 6½, 7)" from shaping, end WS row. Place marker

(pm) each side of center 18 (21, 21, 22) sts.

**Shape Shoulders and Neck:** (RS) BO 5 (5, 5, 6) sts at beg of next 2 rows, then BO 4 (4, 5, 5) sts at beg of next 2 rows **and at the same time**, on first row of Shoulder shaping, work across to first marker, join second ball of yarn and BO center sts; work to end. Working both sides at the same time, at each neck edge BO 5 sts twice.

### FRONT

Work as for Back until Armhole meas 3½ (4, 4, 4½)" from shaping, end WS row. Pm each side of center 10 (13, 13, 14) sts.

**Shape Neck:** (RS) Work across to first marker; join second ball of yarn, BO center sts; work to end. Working both sides at the same time, at each neck edge BO 3 sts 6 times—9 (9, 10, 11) sts rem each side for shoulders. Work even until piece meas same as Back to Shoulder Shaping. **Shape Shoulders:** as for Back.

### SLEEVES

Using larger needles, CO 27 (30, 32, 34) sts.

**Est patt:** (RS) K 2 (0, 1, 2) sts (edge sts, keep in St st), work 23 (30, 30, 30) sts in Cable Rib patt from Chart, beg and end where indicated for your size, k2 (0, 1, 2) sts (edge sts, keep in St st). Work even for 10 rows, working Rows 1–6 once; then rep Rows 7–30, end WS row.

**Shape Sleeve:** (RS) Cont as est, inc 1 st each side every 4 rows 9 (5, 7, 3) times, then every 6 rows 4 (9, 8, 13) times working inc sts in Cable Rib patt as they become available—53 (58, 62, 66) sts, work even until piece meas 12 (12½, 13, 13½)" from beg, end WS row. BO all sts.

### FINISHING

Block pieces to measurements, being careful not to flatten texture. Sew Shoulder seams. Set in Sleeves: sew side and Sleeve seams.

**Neckband:** With RS facing, using circular needle, pick up and knit 70 (77, 84, 91) sts around neck shaping. **Begin Neck Trim Rib:** work 7 Rnds 1–7, **matching first rnd with the rib on the Front and Back.** BO all sts loosely in patt.

Sample knit by Susan Miles.



## ABBREVIATIONS

**approx**—approximately

**beg**—begin(ning)

**BO**—bind off

**cn**—cable needle

**CO**—cast on

**est**—establish(ed)

**inc**—increase

**k**—knit

**meas**—measures

**p**—purl

**patt**—pattern

**pm**—place marker

**rem**—remain(ning)

**rep**—repeat

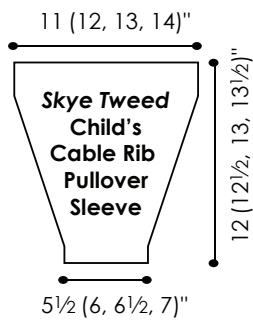
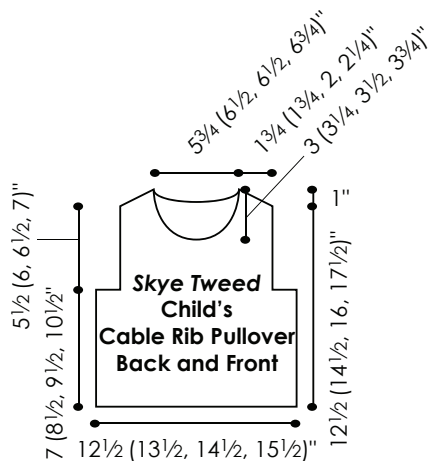
**rnd**—round

**RS**—right side

**st(s)**—stitch(es)

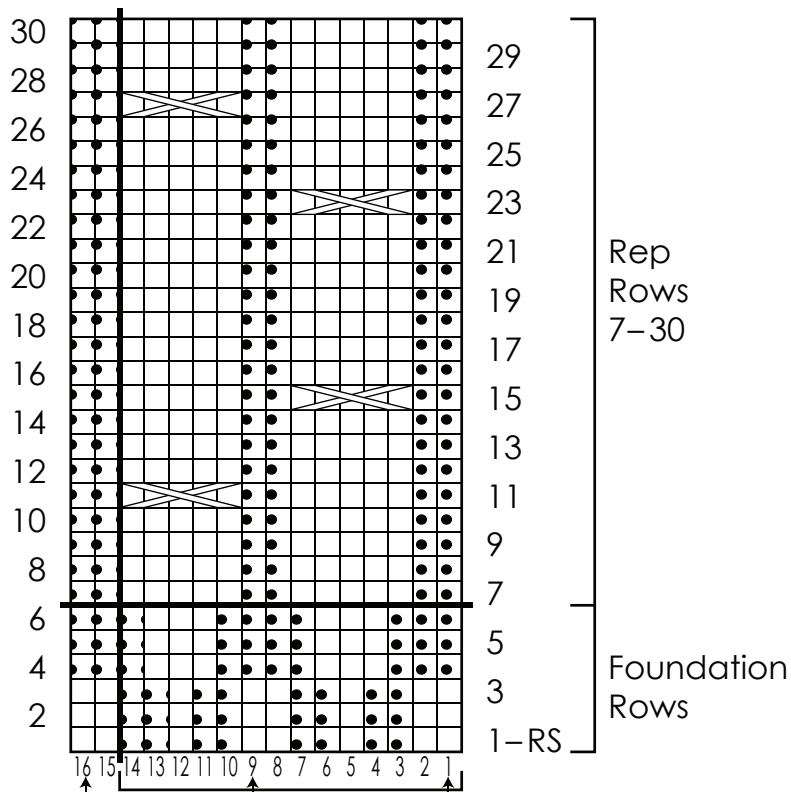
**St st**—Stockinette Stitch

**WS**—wrong side



### Cable Rib Pattern

(multiple of 14 sts + 2; 24 row rep)



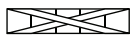
End Sizes 2 (8) Back and Front; End sizes (4, 6, 8) Sleeve

End Sizes (4, 6) Back and Front; End Size 2 Sleeve

Beg All Sizes Back, Front and Sleeve

☐ Knit on RS, purl on WS

◻ Purl on RS, knit on WS

 Slip 1 st to cn, hold in front, slip 3 sts to second cn, hold in back; k1; k3 from second cn; k1 from first cn.