

Lace Scarf

Kristen TenDyke Designs

www.kristentendyke.com

Sizes:

One size

Finished Measurements:

29½" long x 3½" wide

Yarn:

one ball of any worsted weight yarn

Knitting Needles:

one pair US 8 (5 mm)

Notions

closure by Fusion

www.fusionbydesign.com

Gauge:

17 stitches and 23 rows = 3¼" in Lace Panel. Take time to save time, check your gauge.

Scarf

CO 17 stitches.

Work Lace Panel until piece measures 29½" long, or until 12" of yarn remains, ending after a WS row.

BO all sts knitwise.



Lace Panel

(panel of 17 sts)

Row 1: (RS) K1, p1, k2, p1, k2tog, [k1, yo] 2 times, k1, ssk, p1, k2, p1, k1.

Row 2 and all WS rows: (WS) [K1, p1] 2 times, k1, p7, [k1, p1] 2 times, k1.

Row 3: K1, p1, k2, p1, k2tog, yo, k3, yo, ssk, p1, k2, p1, k1.

Row 5: K1, p1, k2, p1, k1, yo, ssk, k1, k2tog, yo, k1, p1, k2, p1, k1.

Row 7: K1, [p1, k2] 2 times, yo, sk2p, yo, [k2, p1] 2 times, k1.

Row 8: Rep row 2.

Repeat rows 1–8 for Lace Panel

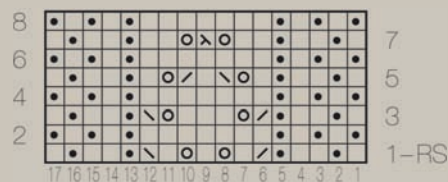


Chart Key

- knit on RS, purl on WS
- ◼ purl on RS, knit on WS
- ⊙ yo
- ▤ ssk
- ▧ k2tog
- ▨ sk2p

Abbreviations

BO: bind off

CO: cast on

k: knit

k2tog: knit 2 sts together (1 st dec'd)

RS: right side

p: purl

sk2p: slip 1 st purlwise, from the left-hand needle to the right-hand needle, k2tog, pass slipped st over knit st created by k2tog (2 sts dec'd)

ssk: (slip, slip, knit) slip 2 sts, 1 at a time, knitwise to the RH needle; return sts to LH needle in turned position and knit them together through the back loops (1 st dec'd)

WS: wrong side

yo: yarn over (1 st inc'd)